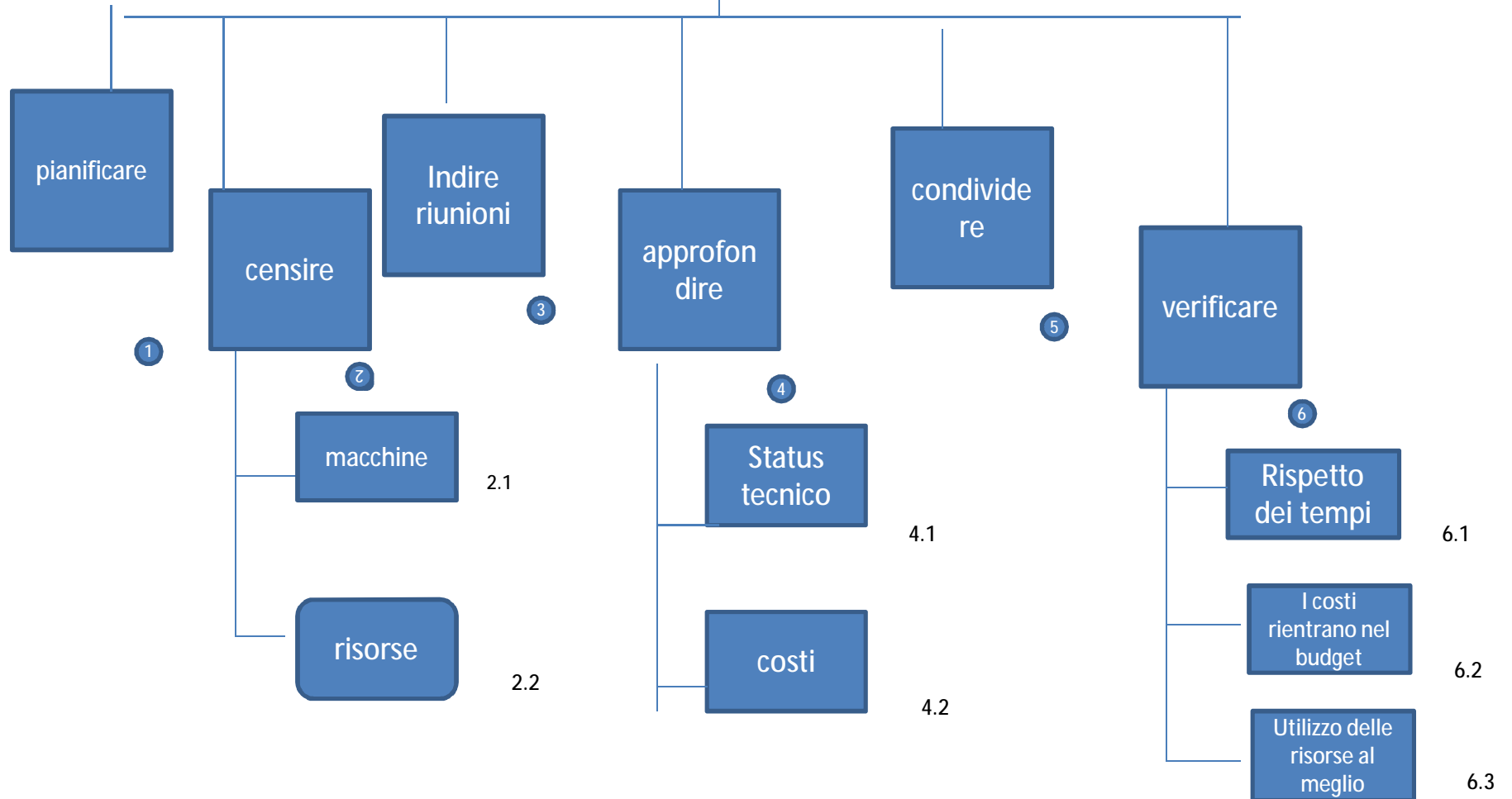







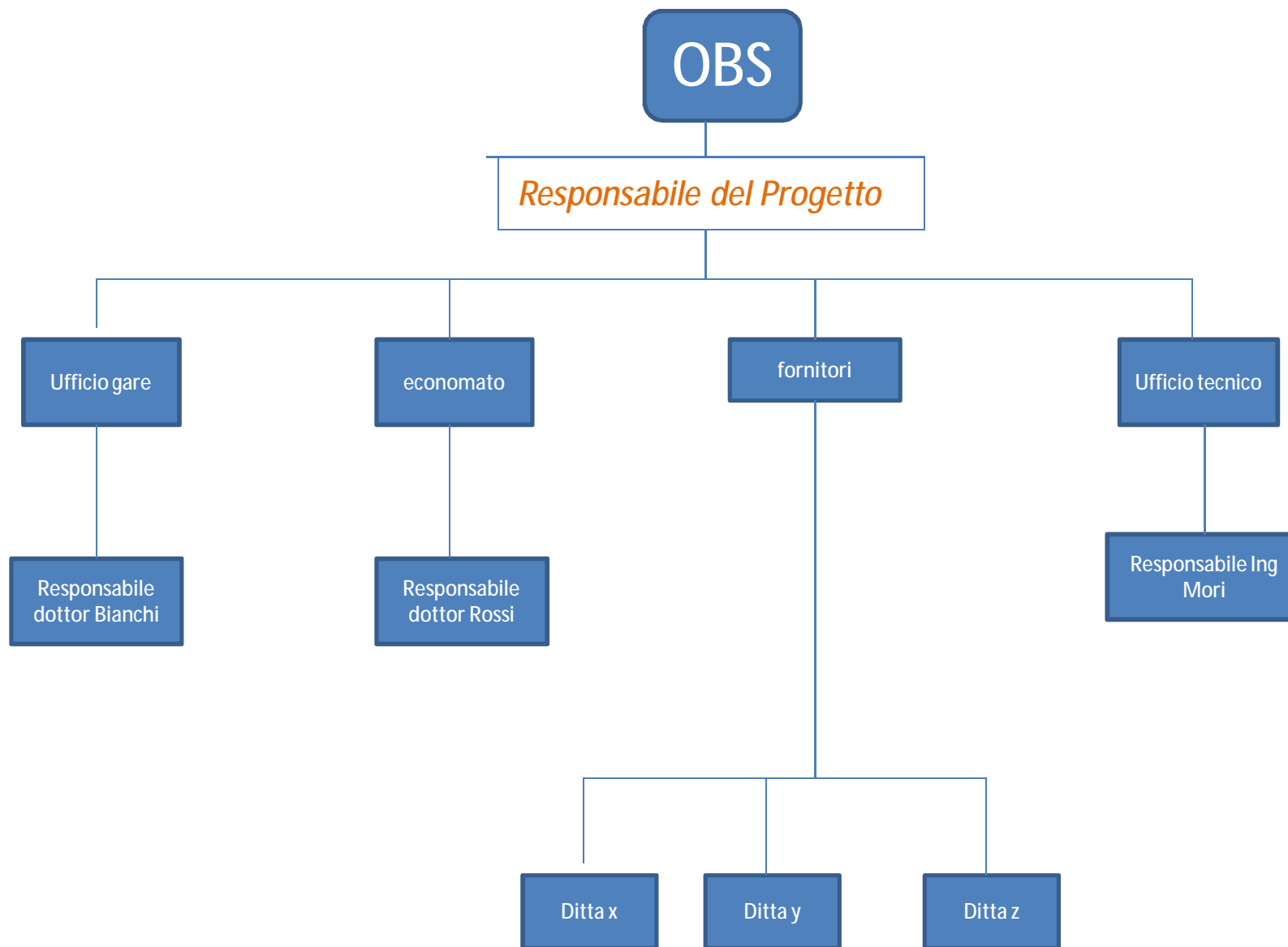
Progetto ammodernamento macchinari reparto di cardiologia

# P.a.m.r.c. W.b.s.



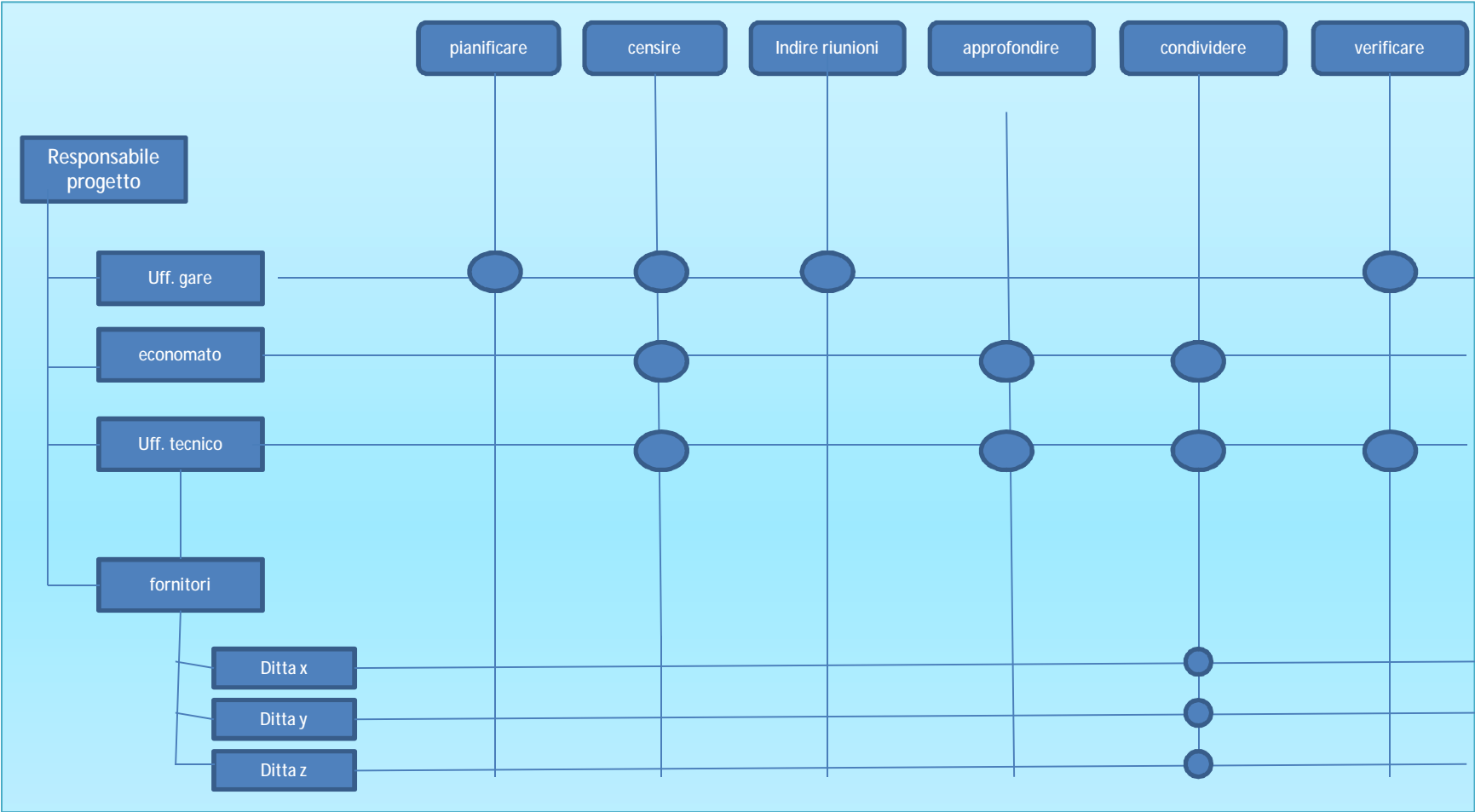
## Censimento dei Macchinari

- Cardiolina  n 2
  - Ecg Holter  n 3
  - Monitor  n 2
  - Ecografo  n 1
  - Defibrillatore  n 4
-

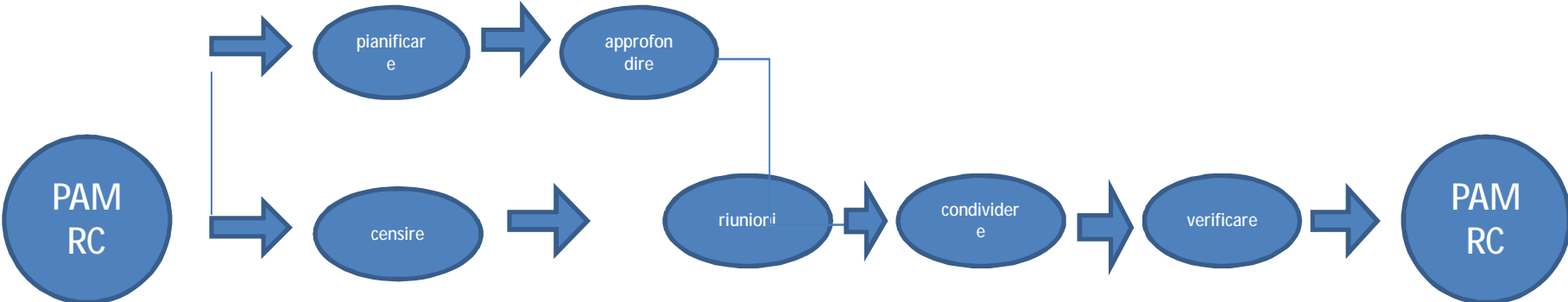


# RAM

## PAMRC



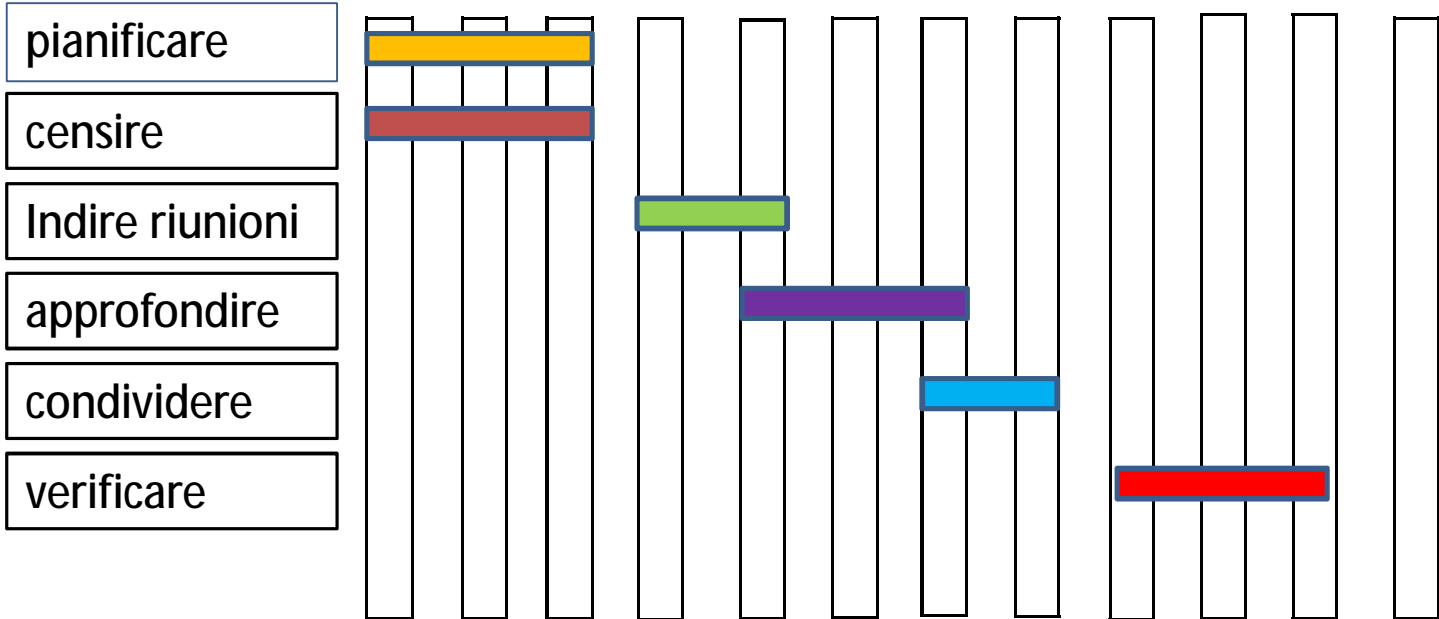
# LOGICA DI PROGETTO



# GANTT

ATTIVITA'

G F M A M G L A S O N D



segue

- Un piano delle risorse per individuare:
- Disponibilità;
- Analizzare le risorse e calcolare carico; analizzare sovra e sotto carico.

Piano dei costi

E in ultimo:

Controllo e valutazione del progetto e chiusura dello stesso.